





WELCOME TO READING MUSEUM

We are delighted to welcome you to Reading Museum, and hope that you will wish to take part in some of the many activities that we have planned. Don't forget to visit our lovely shop and the Pantry café. Please keep an eye on our website for all the latest information. All information correct at time of printing.

Admission FREE

OPENING HOURS

Tuesday – Friday 10am – 4pm

Saturday 10am – 5pm

Closed Sundays, Mondays and

Bank Holidays

Please see our website for Easter opening times

Reading Museum

Blagrove Street

Reading Borough

Council

RG1 1QH

Information:

0118 937 3400

Follow us on:    

REGULAR EVENTS

EVERY WEDNESDAY

Rhymetime at Reading Museum

Families, 10.30am – 11am

Free, drop in

EVERY THURSDAY

Museum Surgery

All ages, 12pm – 4pm, drop in

EVERY FRIDAY

Object Handling

All ages, 10.30am – 12pm, drop in

EVERY SATURDAY

Bayeux Tapestry Tours

All ages, 2pm – 3pm

£5.50, book online

Museums, My Way

Families, Free, drop in



Supported using public funding by
**ARTS COUNCIL
ENGLAND**

For more information and bookings, visit www.readingmuseum.org.uk

EXHIBITIONS

SIR JOHN MADEJSKI ART GALLERY

IN THE COMPANY OF MONSTERS: NEW VISIONS, ANCIENT MYTHS

**Saturday 23 September –
Saturday 24 February 2024**



Strikingly contemporary works by artists Eleanor Crook, Paul Reid and Michael Ayrton have been brought together for the first time. The works share an interest in retelling ancient myths of body difference, diversity, and hybridity.

Inspired by the enduring dreams, or nightmares, of bodily 'otherness', the creatures portrayed ask vital questions about humanity's place in nature, the biological and artistic meaning of diversity and difference, and the vital role that history plays in our understandings of the dynamic working of natural history.

The images of Minotaurs and other mythical Ancient Greek hybrids are contextualised by objects, texts and artworks from the University of Reading and Reading Museum collections.

Look out for the In the Company of Monsters: Art in the Dark Months Part 2 programme of related talks, workshops and residencies. On Saturday afternoons, chat to students including the University Myth Club who, amongst other things, imagine contemporary endings to the stories.

(warning: parents may wish to view the exhibition before letting younger children take a look)

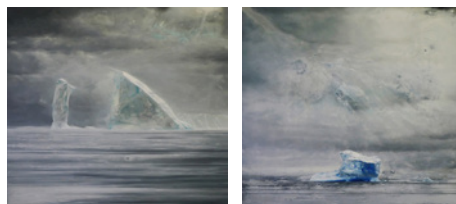
See Art in the Dark Months: In the Company of Monsters, PART 2, Adult Activities



JULIAN GRATER: ARCTIC MIRAGE

Saturday 16 March – Saturday 20 July 2024

Arctic Mirage brings together an ongoing body of work by Reading-based artist Julian Grater which explores the contemporary high arctic through painting, drawing and photography.



THE WELCOME GALLERY

NEW DIRECTIONS COLLEGE - 65TH ANNIVERSARY DISPLAY

**Tuesday 14 November 2023 –
Saturday 1 June 2024**

New Directions College supports individuals in Reading to consider their return to education, enhance their skills and employability, and use their skills effectively in the labour market. This Adult and Community Education service has been offered in Reading since 1958. **This display traces the history of adult education in Reading, showcasing some of the many opportunities the service continues to provide in our communities.**



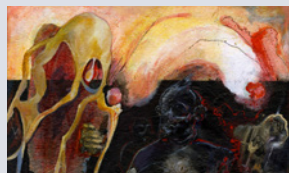
For more information and bookings, visit www.readingmuseum.org.uk

TALKS, TOURS AND WORKSHOPS

ART IN THE DARK MONTHS: IN THE COMPANY OF MONSTERS, PART 2



16+ Adult Activities to get your creativity flowing as we start the New Year. Donations welcome



ART IN THE DARK START: EXPLORING DRAWING AND SCULPTURE IN RESPONSE TO THE IN THE COMPANY OF MONSTERS EXHIBITION

Saturday 13 January

10am – 4pm

Free, booking essential.

Enrol online at:

www.newdirectionsreading.ac.uk/course_type/creative-arts-and-crafts/

MONSTROSITIES, CURIOSITIES, BEASTS AND CHIMERAS: CREATIVE WRITING IN RESPONSE TO THE EXHIBITION WITH WRITER LESLEY SAUNDERS

Saturday 13 January

11am – 3pm

**Free, book online via
our website**

THE DARK ART OF SCULPTING: ELEANOR CROOK, LAPSED CLASSICIST AND SCULPTOR IN RESIDENCE WORKING, INCLUDING A TALK AT 3PM

Saturday 20 January

11am – 4pm

Free, drop in

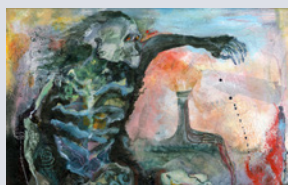
MONSTER AS HERO, HERO AS MONSTER: MICHAEL AYRTON'S RE-IMAGINED MYTHOLOGY.

LECTURE BY
AYRTON'S
BIOGRAPHER
JUSTINE HOPKINS

Saturday 27 January

3pm – 4pm

**Free, book online via
our website**



ART IN THE DARK START: EXPLORING COLLAGE

TECHNIQUES IN
RESPONSE TO
THE EXHIBITION

Saturday 3 February

Adults, 10am – 4pm

Free, booking essential.

Enrol online at:

www.newdirectionsreading.ac.uk/course_type/creative-arts-and-crafts/



MONSTERS AND MYTHS GAMES DAY

Saturday 17 February

Play or watch other people
play contemporary board
games and ancient games.

11am – 4pm

Free, drop in



SPORT IN MIND SESSION: MUM & BABY MOVEMENT & EXERCISE FOR MENTAL WELLBEING

**Mondays from
8 January 2023
(RBC term time only)**

**Adults, 1pm – 2pm
Free, for more
information, please
contact Sport in Mind
0118 9479762 –
info@sportinmind.org –
www.sportinmind.org**



DRAWING ON LOCATION

**Friday 12 January,
9 February, 8 March
and 19 April**

**Adults, 10am – 12pm
Free, booking essential.
Enrol online at:
www.newdirectionsreading.
ac.uk/course_type/creative-
arts-and-crafts/**



HSHAZ THE MARKET TREE CREATIVE IDEAS WORKSHOP

**Saturday 20 January
2024**

**All ages, 11am – 3pm
Free, drop in**



**HIGH STREET HERITAGE
ACTION ZONE**

LOCAL HISTORY WALK & TALK: THE DAY READING WAS BOMBED

Saturday 10 February

**All ages, 11am – 1.30pm
Free, book online via our
website (spaces are limited,
please book early to avoid
disappointment)**



READING MUSEUM'S ABBEY QUARTER TOURS: OFFICIAL

**From Saturday 13 April
onwards**

**All ages
From £10 per person, book
online via our website**



FAMILY ACTIVITIES

FEBRUARY HALF TERM

DON'T MISS OUR SPECIAL MONDAY OPENING!

ACTIVITY CART

Free, drop in

NATURE EXPLORER TRAIL AT READING MUSEUM

Throughout February
Half Term

Families, available
throughout the day
£1.50, pay on the day or
book online via our website

MONSTER MAYHEM TRAIL

Throughout half term

Families £1.50 per trail, pay
on the day or book online via
our website



OUR GREEN STORIES: LIFE ON LAND STOP MOTION ANIMATION WORKSHOPS

Monday 12 February

Ages 5+, Families, 1-hour
sessions starting at 11am,
12.15pm, 1.45pm & 3pm
Free, book online via
our website



SCIENCE EXPERIMENTS: HEDGEHOG BREAD BUDDIES

Tuesday 13 February

All ages, Families, 1-hour
sessions starting at 10am,
11.15am, 1pm & 2.15pm
£4, book online via
our website

MAKE & TAKE: CLIP ON MUSEUM CREATURES, LIFE CYCLE OF A BUTTERFLY

Wednesday 14 February

Families, half-hour sessions
10am – 12pm & 1pm – 3pm
£1, pay on the day, drop in*

RHYMETIME AT READING MUSEUM

Wednesday 14 February
– Every Wednesday

Families, 10.30am – 11.30am
Free, drop in

SCIENCE EXPERIMENTS: DISCOVER HOW PLANTS GROW

Thursday 15 February

All ages, Families, 1-hour
sessions starting at 10am,
11.15am, 1pm & 2.15pm
£4, book online via
our website

VICTORIAN SCHOOLROOM EXPERIENCE IN THE GATEWAY

Friday 16 February

Ages 5+, 11am & 2pm
(meeting at the Abbey
Gateway)
£1 per person, pay on the
day or book online via
our website



FAMILY ACTIVITIES

EASTER HOLIDAYS



THE BIG MULTICOLOURED EASTER EGG HUNT

Throughout the Easter Holidays

Families, £2 per trail, pay on the day or book via our website

CHOCOLATE ARCHAEOLOGISTS

Tuesday 2 April

Ages 5+, Families, 1-hour sessions starting at 10am, 11.15am, 1pm & 2.15pm
£5, book online via our website

MAKE & TAKE: COLOURFUL MUSEUM MODELLING

Wednesday 3 April

Families, half-hour sessions 10am – 12pm & 1pm – 3pm
£2, pay on the day, drop in

RHYMETIME AT READING MUSEUM

Wednesday 3 April – Every Wednesday

Families, 10.30am – 11.30am
Free, drop in

MINI MUSEUM CLUB

Thursday 4 April

Ages 5+, Families, 1-hour sessions starting at 10am, 11.15am, 1pm & 2.15pm
£4, book online via our website

VICTORIAN SCHOOLROOM EXPERIENCE IN THE GATEWAY

Friday 5 April

Ages 5+, 11am & 2pm (meeting at the Abbey Gateway)
£1 per person, pay on the day or book online via our website



MUSEUMS, MY WAY CRAFT SESSIONS

Monday 8 April

Families, 1-hour sessions starting at 10am, 11.15am, 1pm & 2.15pm
£4, book online via our website



MAKE & TAKE: ARCTIC ANIMAL MASKS

Tuesday 9 April

Families, half-hour sessions 10am – 12pm & 1pm – 3pm
£1, pay on the day, drop in



THE BIG ARTWORK: ARCTIC MIRAGE

Wednesday 10 April

All ages, 10am – 3pm
Free, donations welcome, drop in



New Directions College
Build your future here

RHYMETIME AT READING MUSEUM

Wednesday 10 April – Every Wednesday

Families, 10.30am – 11.30am
Free, drop in

NORTHERN LIGHTS LANTERN

Thursday 11 April

All ages, Families, 1-hour sessions starting at 10am, 11.15am, 1pm & 2.15pm
£4, book online via our website



HOW TO FIND US

Reading Museum

Reading Museum is in the Town Hall opposite the rear entrance to Marks & Spencer. The entrance is via glass doors on Blagrave Street, a two minute walk from the railway station and main bus stops.

We recommend using public transport or park and ride to reach central Reading.

www.readingmuseum.org.uk 0118 937 3400

Reading Abbey Quarter

We suggest you begin your visit at Reading Museum to see our permanent Reading Abbey displays.

The Ruins are a 5 to 10 minute walk away. They can be accessed via the Forbury Gardens or from Chestnut Walk beside the River Kennet.

Riverside Museum (open from April)

The Riverside Museum is about a 20 minute walk from Reading Museum. It is accessible from Kenavon Drive or from the Kings Road via Gasworks Road bridge.



Reading Museum, Town Hall, Blagrave Street, Reading, Berkshire, RG1 1QH

