

Reading's  
**DIGITAL**  
Revolution

**Exhibition Starts**  
**Tuesday 18 March 2025**



# WELCOME TO READING MUSEUM

We are delighted to welcome you to Reading Museum, and hope that you will wish to take part in some of the many activities that we have planned. Don't forget to visit our lovely shop and the Pantry café. Please keep an eye on our website for all the latest information. All information correct at time of printing.

**We suggest a donation of £5  
to keep admission free.**

## OPENING HOURS

Tuesday – Friday 10am – 4pm  
Saturday 10am – 5pm  
Closed Sundays, Mondays and  
Bank Holidays

**Reading Museum**  
Blagrove Street  
Reading Borough  
Council  
RG1 1QH

Information:  
0118 937 3400

Follow us on:    

## MUSEUMS OF SANCTUARY

We are proud to have been awarded Museum of Sanctuary status recognising the museum as a place of welcome for Sanctuary Seekers and Refugees. See the Get Involved pages on our website to find out more.



## REGULAR EVENTS

### EVERY WEDNESDAY

#### Rhymetime at Reading Museum

Families, 10.30am – 11am  
Donations welcome, drop in

### EVERY THURSDAY

#### Museum Surgery

All ages, 12pm – 4pm  
Donations welcome, drop in

### EVERY FRIDAY

#### Object Handling

All ages, 10.30am – 12pm  
Donations welcome, drop in

### EVERY SATURDAY

#### Bayeux Tapestry Tours

All ages, 2pm – 3pm  
£5.50, book online

#### Museums, My Way

Families, Donations welcome,  
drop in



Supported using public funding by  
**ARTS COUNCIL  
ENGLAND**

For more information and bookings, visit [www.readingmuseum.org.uk](http://www.readingmuseum.org.uk)

# EXHIBITIONS

## SIR JOHN MADEJSKI ART GALLERY

### READING'S DIGITAL REVOLUTION

Tuesday 18 March 2025 –  
Wednesday 24 December 2025

Get switched on with *Reading's DIGITAL Revolution* – a new and unique mixed-media exhibition celebrating the life and times of Reading's Information Communications Technology (ICT) industry.

Made possible by the National Lottery Heritage Fund and in partnership with The National Museum of Computing, *Reading's Digital Revolution* traces the origins of Reading's tech sector, sharing ideas about its influence on our town's present and future.



### ART STORIES

Until Saturday 22 February 2025

Every picture tells a story. Some the artist leaves for you to find. Some you can make up for yourself. The exhibition showcases recent additions to Reading Museum's collection including works acquired by Reading Foundation for Art, a remarkable charity which has been collecting art for the town for fifty years.



### RIVERSIDE MUSEUM @ BLAKE'S LOCK

Riverside Museum will re-open on 1 April, with its nineteenth century caravan and displays about traveller's lives and traditional industries connected with Reading's rivers.

### THE WELCOME GALLERY BECOMING ROMAN

Until 15 March 2025

This pop-up display in the Welcome Gallery will feature finds from the University of Reading excavations at Silchester, complementing our permanent galleries. Look out for details on our website or follow us on social media. In association with Hampshire Cultural Trust.



### THE ART OF DANCE FROM THE INDIAN SUBCONTINENT

Until end of May

Drawing together artefacts collected by the people of Reading with the Museum's own historic world objects, this display explores how the local Indian community express themselves through dance. Discover the symbolism of these dances and their importance for religious festivals and occasions. In partnership with Kala the Arts and generously funded by the Arts Council.

For more information and bookings, visit [www.readingmuseum.org.uk](http://www.readingmuseum.org.uk)

# TALKS, TOURS AND WORKSHOPS



## SPORT IN MIND SESSION: MUM & BABY MOVEMENT & EXERCISE FOR MENTAL WELLBEING

Every Monday  
(RBC term time only)

Adults, 1pm – 2pm

Free, for more information,  
please contact Sport in Mind  
0118 9479762 –

info@sportinmind.org –  
www.sportinmind.org



## READING MUSEUM'S OFFICIAL ABBEY QUARTER TOURS

From April 2025 (see  
website for dates)

All ages

From £10 per person,  
book online via our  
website

## ROMAN SILCHESTER TALKS

A series of three talks at  
Reading Museum & Town  
Hall, by Professor Michael  
Fulford CBE, FBA, FSA,  
Professor of Archaeology  
at the University of  
Reading. Professor Fulford  
specialises in the British  
Iron Age, Roman Britain  
and landscape archaeology.

Reading Museum, with  
support from the Friends  
of Reading Museum,  
have organised the talks  
to raise funds for the  
redevelopment of the  
Silchester Roman Gallery.



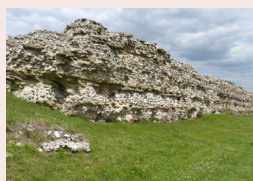
**Saturday 15 March**

Talk 1: The Origins of  
Roman Silchester



**Saturday 12 April**

Talk 2: Silchester: Life in  
the Roman City



**Saturday 10 May**

Talk 3: Silchester: The End  
of the Roman City

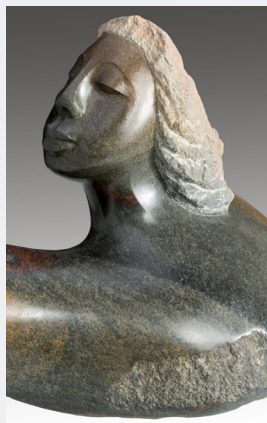
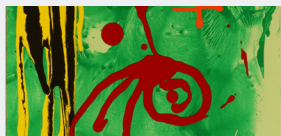
Adults, starts at 11am £12,  
book online via our website

## ART IN THE DARK MONTHS 2025

### OBJECT HANDLING: ART STORIES

Every Friday in January  
and February

All ages, 10.30am - 12pm  
Donations welcome, drop in





## ART IN THE DARK MONTHS

### CREATIVE WRITING WORKSHOP: THE MIRROR CRACK'D FROM SIDE TO SIDE

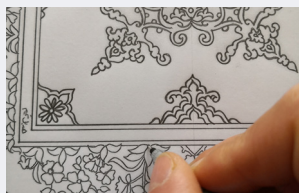
Saturday 11 January

Adults 16+, 11am – 4pm  
£12 book online via our website

### DRAWING ON LOCATION

Monthly on a Friday  
from 17 January  
(see website for dates)

Adults, 10am – 12pm  
£17 / or Free\* for eligible learners  
Enrol via: [www.newdirectionsreading.ac.uk](http://www.newdirectionsreading.ac.uk)



### WORKSHOP: ISLAMIC ART MEETS BRITISH FLOWERS

Saturday 25 January

Artist Hadil Tamin will lead you through a day exploring some of the processes and techniques involved in the complex and exquisite patterns in Islamic designs.

Adults, 10.30am – 4pm  
£17 / or Free\* for eligible learners  
Enrol via: [www.newdirectionsreading.ac.uk](http://www.newdirectionsreading.ac.uk)

### ART STORIES WALKING TOUR: CELEBRATING READING FOUNDATION FOR ART Q50

Saturday 1 February

All ages, 11am – 12pm  
£8, book online via our website



### ART STORIES: MEET THE ARTISTS, MEET THE WRITERS

Saturday 1 February

All ages, 3pm – 4.30pm  
Donations welcome, drop in

### WORKSHOP: EXPLORING CERAMICS

Saturday 8 February

Adults, 10.30am – 4pm  
£17 / or Free\* for eligible learners  
Enrol via: [www.newdirectionsreading.ac.uk](http://www.newdirectionsreading.ac.uk)

*\*These sessions are delivered by New Directions College as part of their Tailored learning, Community Arts & Wellbeing programme. They are FREE for eligible learners. We will ask for your ID to check if you are eligible before we confirm your place. To qualify for funding, participants need to have been resident in the UK for 3 years. Please check our website for full criteria.*



### GAMES DAY: ADVENTURES AND ARTEFACTS!

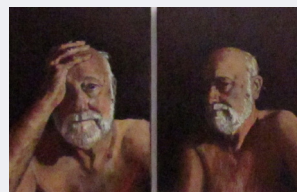
Saturday 8 February

Join us for a Dungeons and Dragons afternoon in Reading Museum, supported by Eclectic Games and Museums Partnership Reading – more details on our website.

Ages 13+  
Donations welcome, book online via our website



Supported using public funding by  
ARTS COUNCIL  
ENGLAND



# FAMILY ACTIVITIES

## February Half Term

Saturday 15 February to Saturday 22 February

Don't miss our special Monday opening.

### ACTIVITY CART

Free, drop in

### ROMAN PAW TRAIL

Throughout February  
Half Term

Families, available throughout the day  
£1, pay on the day or book online via our website

### A ROMAN APOTHECARY HERB GARDEN

Tuesday 18 February

All ages, Families, 1-hour sessions starting at 10am, 11.15am, 1pm & 2.15pm  
£4, book online via our website



### MEDIEVAL RHYMETIME, SONG AND LIVE MUSIC AT READING MUSEUM

Wednesday 19 February

All ages, Families, 10.30am – 11.30am  
Donations welcome, drop in

### MAKE & TAKE: MEDIEVAL MUSICAL INSTRUMENTS

Wednesday 19 February

Families, half-hour sessions 10am – 12pm & 1pm – 3pm  
£2, pay on the day, drop in\*



### BERTIE BADGER AND FRIENDS

Thursday 20 February

All ages, Families, 1-hour sessions starting at 10am, 11.15am, 1pm & 2.15pm  
£4, book online via our website

### VICTORIAN SCHOOLROOM EXPERIENCE IN THE GATEWAY

Friday 21 February

Ages 5+, 11am & 2pm (meeting at the Abbey Gateway)  
£2 per person, pay on the day or book online via our website



### FAMILY DIGI-FUN DAY

Saturday 22 March

Join us for a takeover day at Reading Museum: the building will be packed with workshops with a digital theme to celebrate the opening of our new exhibition, *Reading's DIGITAL Revolution*. Work with our partners Digit<all> Charity to solve problems using simple programming!

All ages, 10am, 11.30am and 2pm  
Donations welcome, book online via our website



# FAMILY ACTIVITIES

## Easter Holidays

Saturday 5 April to Saturday 19 April

### ACTIVITY CART

Free, drop in



### THE LITTLE CHICK EASTER EGG HUNT

Throughout the Easter Holidays

Families, £1.50 per trail, pay on the day or book via our website



### VICTORIAN SCHOOLROOM EXPERIENCE IN THE GATEWAY

Tuesday 8 April

Ages 5+, 11am & 2pm  
(meeting at the Abbey Gateway)

£2 per person, pay on the day or book online via our website

We will also have a special Victorian trail and Victorian object handling on the day!



### MAKE & TAKE: MUSEUM BADGE MAKING

Wednesday 9 April

Families, half-hour sessions  
10am – 12pm & 1pm – 3pm  
£2, pay on the day, drop in

### RHYMETIME AT READING MUSEUM

Wednesday 9 April

Families, 10.30am – 11am  
Free, drop in



### HARRIET HEDGEHOG AND FRIENDS

Thursday 10 April

Ages 5+, Families, 1-hour sessions starting at 10am, 11.15am, 1pm & 2.15pm  
£4, book online via our website

### MUSEUMS, MY WAY CRAFT SESSIONS

Monday 14 April

Families, 1-hour sessions starting at 10am, 11.15am, 1pm & 2.15pm  
Suggested donation £4, book online via our website



### CREATIVE PROGRAMMING FOR FAMILIES

Tuesday 15 April

Workshops in the Welcome Gallery at 10am, 11.30am, and 2pm



### RHYMETIME AT READING MUSEUM

Wednesday 16 April

Families, 10.30am – 11am  
Free, drop in

### MAKE & TAKE: CHOCOLATE BUGS

Weds 16 April

Families, half-hour sessions  
10am – 12pm & 1pm – 3pm



### THE BIG CHOCOLATE DIG

Thursday 17 April

Ages 5+, Families, 1-hour sessions starting at 10am, 11.15am, 1pm & 2.15pm  
£5, book online via our website

# HOW TO FIND US

## Reading Museum

Reading Museum is in the Town Hall opposite the rear entrance to Marks & Spencer. The entrance is via glass doors on Blagrove Street, a two minute walk from the railway station and main bus stops.

We recommend using public transport or park and ride to reach central Reading.

[www.readingmuseum.org.uk](http://www.readingmuseum.org.uk)

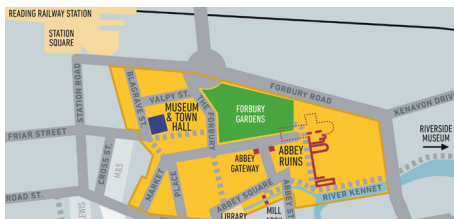
## Reading Abbey Quarter

We suggest you begin your visit at Reading Museum to see our permanent Reading Abbey displays.

The Ruins are a 5 to 10 minute walk away. They can be accessed via the Forbury Gardens or from Chestnut Walk beside the River Kennet.

## Riverside Museum

The Riverside Museum is about a 20 minute walk from Reading Museum. It is accessible from Kenavon Drive or from the Kings Road via Gasworks Road bridge.



Reading Museum, Town Hall, Blagrove Street, Reading, Berkshire, RG1 1QH



Supported using public funding by  
**ARTS COUNCIL ENGLAND**

## READING MUSEUM SHOP

The Reading Museum gift shop draws inspiration from the Museum's diverse and fascinating collections through handmade gifts and souvenirs created by local artists and makers. Every purchase made goes towards supporting the Museum.

Browse our online shop via our website  
[www.readingmuseum.org.uk](http://www.readingmuseum.org.uk)



[www.readingmuseum.org.uk](http://www.readingmuseum.org.uk)