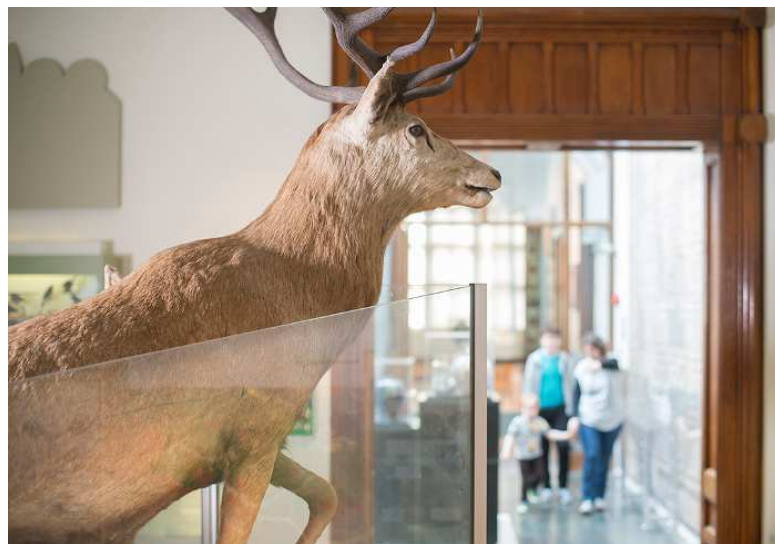


Environmental Policy Statement

2017-2022

Building a Better Reading



Approved by Reading Borough Council Decision Book,
Issue 542, 1 September 2017



www.reading.gov.uk



Reading
Borough Council
Working better with you

Reading Museum: Environmental policy statement

Date created: September 2017

Review date: September 2022

About our museum

Reading Museum is part of Reading Borough Council's (RBC) Economic and Cultural Development Service. We operate from Reading's Grade II listed Victorian Town Hall within the historic Abbey Quarter in the town centre. The Museum has been providing original opportunities for learning, inspiration and enjoyment since 1883. Today the Museum's collection consists of over 400,000 objects. In 1911 we were one of the first museums to provide a loans service for schools, offering a unique opportunity for schools to handle real artefacts.

We have Full Museum Accreditation status from the Arts Council England (ACE). Over 110,000 people including 18,000 students visit the Museum every year. Many more use our outreach and online services. We have a strategic partnership with the University of Reading's Museum of English Rural Life, and together are part of ACE National Portfolio 2018-2022 (as the Reading Town and Country Museums Partnership). The Museum also has the Investing in Volunteers award and is a founder member of the Happy Museum Affiliate scheme.

Our mission statement

Reading Museum & Town Hall celebrates Reading's heritage by:

1. innovatively engaging with our local communities
2. providing acclaimed opportunities for object-based learning, inspiration and enjoyment
3. caring for and improving access to our important collections and heritage sites
4. developing enterprising catering, event and retail income opportunities

Our impacts and commitments

We are committed to reducing the negative environmental impacts of our operations at a service level and contributing to RBC's overarching corporate commitments. As an ACE National Portfolio Organisation (NPO) from 1 April 2018 to 31 March 2022 we will be working with ACE to further reduce our impacts on the environment. This policy is supported by an Action Plan that is reviewed every two years.

Reading Museum - Environmental policy statement

Reading Borough Council environmental policy background

RBC is committed to a cleaner and greener environment for those that live in, work in or visit Reading. In the context of pressing environmental concerns such as climate change, RBC recognises that it plays a significant role in safeguarding and improving the quality of life locally, nationally and globally, now and for future generations.

A vision for Reading

Reading Means Business on Climate Change has been developed by the Reading Climate Change Partnership (RCCP) and presents a vision for Reading in 2020 (Reading Climate Change Strategy 2013-2020):

'Reading's thriving network of businesses and organisations will be at the forefront of developing solutions for reducing carbon emissions and preparing for climate change. Low carbon living will be the norm in 2050.'

Reading's Strategic Target

'We will work to reduce the carbon footprint of the borough in 2020 by at least 34% compared with levels in 2005. We are also aiming for Reading's carbon footprint to have reduced by 80% by 2050.'

In order to achieve this vision and target, the strategy aims to address two broad objectives:

1. Develop a low carbon Reading
2. Prepare for a changing climate

Reading Means Business on Climate Change - Climate Change Strategy

The Climate Change Strategy brings together strategic priorities by theme:

1. Energy supply
2. Low carbon development
3. Natural Environments
4. Water supply and flooding
5. Transport
6. Purchasing, supply and consumption
7. Education, communication and influencing behaviour

RBC has a number of policies which support work on both adapting to climate change and working to reduce our emissions:

- In January 2008 RBC agreed a target of RBC being Zero Carbon by 2050.
- A Supplementary Planning Document on Sustainable Construction and Design was introduced in 2011 and includes measures to improve energy use of all new buildings beyond the national standard.
- The Local Transport Plan 2011-2026 includes measures for reducing traffic in Reading, improving facilities for cycling and also public transport.

Reading Museum - Environmental policy statement

- There is a Waste Minimisation Strategy 2015-2020

As a result of implementing these policies in 2014 Reading's emissions were 33% below 2005 levels and were down 35% per capita.

Reading Museum: Environmental policy statement

Reading Museum continually seeks to improve the environmental performance of its activities, while reducing its costs and bringing improvements for both visitor and staff wellbeing. It is committed to reducing impacts to the environment from all areas of its operation within the context of the Council's corporate environmental policies and action plans.

Our aims are to:

- Ensure as a minimum standard, full compliance with Council policies which meet the relevant environmental legislation and codes of practice
- Support our staff to understand how they affect the environment and encourage them to take more care of it
- Promote the responsible and efficient use of energy and water in our buildings and activities to reduce costs and contribute to positive environmental change
- Reduce the consumption of raw materials and the production of waste in our operational activities
- Encourage the use of environmentally sound and sustainable resources in our operational activities
- Source sustainable and ethical products where possible both for use within the museum and for sale in the museum shop and cafe
- Use suppliers and contractors that recognise and address environmental matters relating to their products and services
- Raise awareness and promote sustainable options for staff and visitor travel
- Promote environmental awareness as part of our work with local communities and our users